



NEW ZEALAND HORSE & WINE

26 Nov – 1 Dec, 2026 (5 nights)

SINCE
2005



JOIN US

Ontrack Racing Tours is proud to present our 2026 New Zealand Horse & Wine "Stallion" Tour.

New Zealand has long been regarded as the breeding ground for some of the best Thoroughbreds in Australasia. Join us on a 6 day / 5 night tour of New Zealand's rich breeding country in the Waikato/Cambridge area of the North Island.

Our Auckland base is the beautifully appointed Pullman Auckland Hotel (five star) for a three night stay, before moving to the Novotel Tainui at Hamilton for the final 2 nights completing the 5 night tour. The Pullman is well located within the heart of the Auckland shopping district and a short walk to the Viaduct area which is well populated with restaurants and bars. Its rooms are luxurious and spacious.

This tour takes in stakes racing action for the Eagle Technology Stakes which is run at the picturesque Ellerslie racecourse which is located a short 20 minute coach ride from your hotel.

The Auckland visit will also feature a day trip to one of New Zealand's premier wine growing regions on Waiheke Island, a short 30 minute ferry ride from Auckland.

Our visit to Waiheke Island will feature wine tasting and lunch at the picturesque Mudbrick Vineyard which enjoys breathtaking views back to the Auckland skyline.

The second half of the tour has us staying at the Novotel Tainui at Hamilton, located just a short drive from the Waikato/Cambridge area.

Our stud visits take in New Zealand's best nurseries', the feature being Cambridge Stud. We also inspect WaikatoStud, Windsor Park Stud, Rich Hill Stud and Westbury Stud. Throughout the tour we will be using luxury air conditioned road coaches making our brief time on the road most enjoyable.

I hope you can join us on this wonderful tour.

Grant Morgan

Tour Host, Ontrack Racing Tours

TOUR HOSTS & CO-ORDINATORS



GRANT MORGAN

The Managing Director of Ontrack, Grant has held a number of prominent roles within the racing and breeding industry as a bloodstock agent, marketing manager, business manager and racing manager. Group 1 winners Brazen Beau and Bois D'Argent are among a growing list of top class gallopers secured by Grant as a bloodstock agent. Grant has been hosting popular racing and breeding tour groups since 2003 after co-founding OnTrack in 2002.

JENNY MORGAN

Jenny is the administrative backbone of the business handling administration and accounts for Ontrack from the companies offices at Bundall. Before co-founding Ontrack with Grant in 2002, Jenny had extensive work experience in the Superannuation and Life Insurance industries after completing a Bachelor of Arts.



BRIAN LAWLOR

Brian Lawlor is widely experienced in the New Zealand racing industry and now resides on the Gold Coast. Brian's racing resume includes roles with Radio New Zealand, New Zealand Truth and the Wellington Jockey Club. He was also extensively involved in New Zealand Central Districts clubs in various positions. Holding a lifelong passion for racing and breeding, Brian has been working with Ontrack since 2009.



ACCOMMODATION

PULLMAN AUCKLAND (Auckland Harbour, 3 nights)

One of Auckland's largest 5 star hotels. Pullman Auckland Hotel is conveniently located in the city centre, close to popular attractions and well-known shopping and entertainment districts. The hotel offers 260 guest rooms, 80 Residence rooms, 11 function rooms including the magnificent Princes Ballroom, and an international restaurant, bar, and award winning Spa. The hotel is a class above the rest with its impeccable stylish décor, high quality service and spectacular city and harbour views.



NOVOTEL TAINUI (Hamilton, 2 nights)

Novotel Tainui Hamilton is a 4 star hotel in the heart of Hamilton, on the banks of the Waikato River and adjacent to the Sky City Casino and entertainment complex. Ideal for business trips and holidays, the hotel features 177 rooms, plus conference facilities for up to 350 delegates. Relax with a drink in the bar, or dine at the award winning restaurant. Guests can enjoy the sauna and spa, with beauty therapies available, or explore the shopping, dining and entertainment districts of the city.



TOUR FEATURES

Our tours feature a wealth of inclusions at no added cost to our guests. We believe these features provide you with almost everything you might need in the way of activities and meals during the tour.



Feature Dinner - ONSLOW (Auckland)

Situated steps away from our hotel, the modern Onslow is situated in one of the most historic, yet modern buildings in Auckland. Created by top New Zealand chef Josh Emmett, Onslow is described as sophisticated yet relaxed. Our group will enjoy a two course meal.



Feature Gourmet Lunch - MUDBRICK RESTAURANT & VINEYARD (Waiheke Island, Auckland)

Mudbrick Winery and Restaurant is a beautiful restaurant on Waiheke Island, just 35 minutes from the central city in Auckland. Mudbrick has a wonderful ambience, and has been described as "one of the most romantic places on Earth". The Mudbrick chefs have won international acclaim showcasing the best NZ ingredients. We enjoy a two course lunch at Mudbrick on Day 2 of the tour.



Wine Tasting - BATCH (Waiheke Island, Auckland)

We visit the beautiful Thomas families Batch Winery for some wine tasting. Wines created by Batch Winery on Waiheke are batch-driven and boutique, unlike many international wine regions with their acre upon acre of vines, mammoth harvest machines working the rows and huge productions where the resulting grapes for wine production becomes a commodity.



Raceday & Lunch - ELLERSLIE - Eagle Technology Stakes Raceday

Enjoy top stakes racing at New Zealand's premier racecourse Ellerslie, for the running of the Eagle Technology Stakes raceday. The group will enjoy a buffet luncheon in the exclusive SILKS room which has panoramic views of the racecourse from your reserved seats and table. Drink on arrival, cash bar for drinks.





Tour - CAMBRIDGE Stud Heritage Centre (Cambridge)

The Cambridge Stud Heritage Centre features interactive displays, photographs, trophies, and memorabilia that tell the story of Sir Patrick Hogan and Sir Tristram's contribution to the New Zealand and international racing industry.



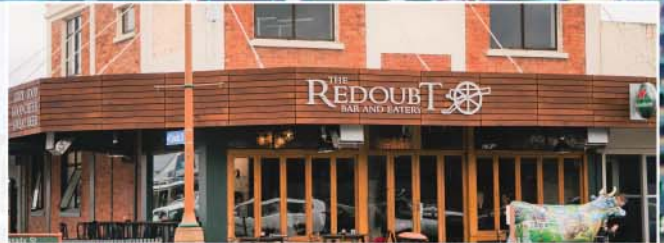
Beer Tasting - TANTALUS (Waiheke Island, Auckland)

For the beer lovers we visit the wonderful Tantalus on Waiheke. One of the newest boutique cellar doors and restaurants on Waiheke, Tantalus features exquisite architecture and even better hand crafted beers which will be sure to go down a treat. Tantalus opened its doors in September 2016 and is among the top destinations on Waiheke.



Lunch - REDOUBT Bar & Eatery (Matamata)

One of the most popular casual dining and drinking venues in Matamata, our group will enjoy a light lunch in the Redoubt Bar and Eatery.



Dinner - CAFÉ ALMA (Novotel, Hamilton)

After a day in the Waikato, the group returns to the Novotel to freshen up before a two course meal in the delightful Café Alma. Overlooking the Waikato River, Café Alma serves popular local dishes.



Dinner - IGUANA (Hamilton)

Hamilton is quickly becoming a dining and bar hub. Iguana is one of the cities long established favourites. Located a short walk from the Novotel on Victoria Street. Established in 1996, Iguana boasts original timber flooring, fireplace and a cost candlelit atmosphere. Guests will enjoy a two course meal at Iguana on our first night in Hamilton.



Private Tour & Lunch in the VIP room. NEW ZEALAND BLOODSTOCK - Sales Complex - Karaka

On the final day of the tour, we enjoy a private tour of the New Zealand Bloodstock Sales Complex at Karaka. Some of the best horses to race in Australasia are sold through the Karaka sales ring at their annual yearling sale in January/February.



STUD TOURS & STALLION PARADES

CAMBRIDGE STUD, CAMBRIDGE - STUD TOUR & STALLION PARADE

Cambridge Stud was established in 1975 by Sir Patrick & Lady Hogan. The following year it became home to Sir Tristram who went on to become the multiple champion sire of Australasia. Sir Tristram died in 1997. His champion son Zabeel took over the mantle, also standing at Cambridge Stud before his death in 2015. Cambridge Stud changed hands in 2017 with Brendan & Jo Lindsay purchasing Cambridge. The property has been since transformed to include a museum which pays homage to the properties long history.



WINDSOR PARK STUD, WAIKATO - STUD TOUR & STALLION PARADE

Windsor Park Stud is owned by Nelson and Sue Schick and their son Rodney, who manages the day to day operations on the farm. In 1998 and 2001 Windsor Park Stud was honoured for its achievements by the New Zealand Thoroughbred Industry when receiving the prestigious New Zealand Breeder Of The Year award. The stud also has a proven record of producing elite Group One winners on the race-tracks of New Zealand, Australia, Hong Kong and South Africa.



WAIKATO STUD, WAIKATO - STUD TOUR & STALLION PARADE

Owned and operated by the Chittick family, Waikato Stud is a world renowned thoroughbred nursery, established almost 40 years ago. The Waikato Stud properties, comprising more than 1200 acres of premium grade land, are dedicated purely to the breeding, rearing and preparation of young horses. Waikato Stud is designed to cater for every stage of a thoroughbred's life; starting with the finest neonatal care at the stud's newborn facility; extending through yearling sales preparation or for private sale at later stages of development, to broodmare care and boarding.



RICH HILL STUD, WALTON - STUD TOUR & STALLION PARADE

Rich Hill Stud, Walton was founded in 1994 and has become a show piece property of 320 acres situated in the heart of the fertile Waikato basin. The land is owned by a partnership consisting of retired Matamata Veterinarian Colin Thompson and wife Irene, their son John Thompson and wife Colleen, Alan Galbraith QC and Justice Bill Wilson. The business is owned and managed by John, Colleen and Alan.



WESTBURY STUD, KARAKA - STUD TOUR & STALLION PARADE

Now owned by Australian businessman Gerry Harvey, Westbury Stud is located just 30 minutes from the CBD of Auckland City and is within ten minutes of New Zealand Bloodstock's world class selling facility. Situated on 212 acres of prime Karaka farmland, Westbury Stud is committed to producing superior racehorses and continually aims to 'raise the bar' with the level of expertise and quality of management employed at the property. Over the past eighteen years Westbury Stud has developed a proud tradition of producing superior thoroughbreds that have proven capable of performing at the highest level of competition.



SUMMARY ITINERARY



Thursday 26 November 2026 (Day 1)

Afternoon: 2pm Check in Pullman, Auckland
Dinner: Onslow, Auckland

Friday 27 November 2026 (Day 2)

Breakfast: Pullman, Auckland
Morning: Ferry ride to Waiheke Island. Road coach tour
Wine tasting: Batch
Beer tasting: Tantalus
Lunch: Mudbrick Vineyard
Afternoon: Return ferry to Auckland
Evening: Free time to explore Auckland

Saturday 28 November 2026 (Day 3)

Breakfast: Pullman, Auckland
Morning: Free time to explore Auckland
Lunch: Road coach to Ellerslie
Afternoon: Racing action at Ellerslie before return coach departs for Pullman
Evening: Free time to explore Auckland

Sunday 29 November 2026 (Day 4)

Breakfast: Pullman, Auckland
Morning: Road coach departs Auckland. Stud visit: Rich Hill Stud
Lunch: Redoubt Eatery & Bar, Matamata
Afternoon: Stud visit: Road coach to Novotel Tainui, Hamilton
Dinner: Iguana, Hamilton

Monday 30 November 2026 (Day 5)

Breakfast: Novotel Tainui, Hamilton
Morning: Stud visit: Waikato Stud
Lunch: Windsor Park Stud
Afternoon: Stud visit: Cambridge. Stud
Dinner: Café Alma, Novotel Tainui

Tuesday 1 December 2026 (Day 6)

Breakfast: Novotel Tainui, Hamilton
Morning: Depart Hamilton. Stud visit: Westbury Stud
Lunch: New Zealand Bloodstock, Karaka
Afternoon: Road coach to Auckland airport, arrive 2pm

PRICES

Fly Yourself Packages - Land Only

Double/Twin Share: \$3,951 per person

Single Share: \$4,485 per person

Arrange Your Own Flights

Arrange your own flights flying to Auckland. Regular daily flights from Australia are available from major commercial carriers. This enables guests to take advantage of frequent flyer packages. You can also add your own personal itinerary before or after our tour to make the most of your visit to New Zealand.

BOOKING

This tour is subject to the terms and conditions stated on the 2026 NEW ZEALAND HORSE AND WINE "STALLION" TOUR booking form. To reserve your place on this special tour please complete and sign the booking form along with a copy of your passport and forward to:



Phone: 1300 785 529

International Phone: +61 7 5591 9584 International Fax: +61 7 5591 9555

Office: Level 15, Corporate Centre One, 2 Corporate Court Bundall Queensland 4217
Postal Address: PO Box 8867 GCMC QLD 9726

Email: tours@getontrack.com.au

Web: www.ontrackracingtours.com.au